



St. Patrick's Catholic School News

625 Alexandra St, (PO Box 300) Te Awamutu 3800. School: Ph (07) 871 4669, Fax (07) 871 4818
Email: principal@stpatta.co.nz School website: www.stpatta.co.nz

Vol 1.9

Thursday 31st March
2016

Principal: Brian Belczacki.
Deputy Principal: Cass Sutton. **Assistant Principal:** Marcus Oxenham.
Director of Religious Studies: Gabrielle Balemi.
Office Staff: Dana Macdonald, Celena O'Donnell.
Bursar: Patty Dudson.
Parish Priest: Fr Joe Stack.
BOT Chairperson: Hayley McConnell.

Kia ora Parents, Guardians and Children,

The Charism for this week is: Stewardship

We are all called to be stewards as we all have the responsibility to look after something precious that actually belongs to God and that is US.

We belong to God through Baptism and we, each of us, have that responsibility to be good stewards in helping

others and to ourselves, **know** God better.

We are not people of the cross, we are people of Easter as we remember the cross but we celebrate the message of Easter ie: Jesus rising from the dead.



A quote from St Mary of the Cross MacKillop



'Judge not, leaving that most painful duty to those appointed for it.'

26th April 1873

St Mary of the Cross MacKillop
Pray for us



JOIN US ON FACEBOOK....

To find us following the link...

<https://www.facebook.com/stpatsteawamutu>

TERM DIARY

Wk 9	Fri 1 st Apr: Team 2&3 Assembly 2:15-2:45pm Team 1 Assembly 2:30-2:45pm Sun 3 rd April: ASB Top School Games
Wk 10	Mon 4 th April: Prayer Ass 8:55am CH: Stewardship Thur 7 th April: Marzipan Performance 12:45-1:30pm
Wk 11	Mon 11 th April: Prayer Ass 8:55am CH: Stewardship Science Roadshow 9am-3pm@Hall Tues 12 th April: Cricket Workshop Team 3, 1:00-3pm Fri 15 th April: Whole School Assembly, Team 3 Led, 2:00-2:45pm
TERM 1 HOLIDAYS - Mon 18 th April – 29 th April	
Wk 1	TERM 2 Mon 2 nd May: Cricket Workshop Team 1&2, 11:00-3pm

Please check the online version of the school calendar by following the link: http://www.stpatta.co.nz/1/embedded_items/1-school-calendar as this is updated as events or changes come to light

More Easter Liturgy artwork on display in the church...



Our Vision: 'To provide 21st century learning in a Catholic environment which empowers children to strive for excellence'.



Welcome back to our school...

Ngarini Kahura and Jordyn Smith.
It was lovely to welcome Jordyn and Ngarini who have returned from Australia.

PAT RESULTS.

We are very pleased with the first round of formal testing that has occurred recently.

National Norms - Stanines								
1	2	3	4	5	6	7	8	9
4%	7%	12%	17%	20%	17%	12%	7%	4%
Well belowbelow.....AT				AT		AT..Above..Well Above		

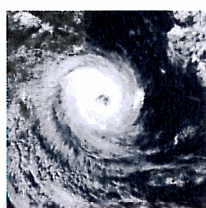
Reading Comprehension – Stanines (Our School)								
1	2	3	4	5	6	7	8	9
0%	2%	7%	15%	24%	28%	16%	5%	2%

Reading Vocabulary – Stanines (Our School)								
1	2	3	4	5	6	7	8	9
0%	2%	5%	15%	30%	25%	15%	2%	2%

Reading Vocabulary – Stanines (Our School)								
1	2	3	4	5	6	7	8	9
0%	2%	5%	15%	30%	25%	15%	2%	2%

Mathematics – Stanines (Our School)								
1	2	3	4	5	6	7	8	9
1%	2%	9%	18%	21%	16%	13%	10%	7%

Fiji Appeal... As you all know, Fiji was very badly damaged in the cyclone a fortnight ago. Our caretaker, Bibi Nasilasila's village was destroyed. There is a project developed by Fijian businessmen, to get solar power into every village so that access to power is not disrupted by future weather events. The cost of getting solar power into each village is \$1000.00. This gives access to solar power to every village.



We want to fundraise \$1000.00 to get solar power into Bibi's village. Last Thursday we raised over \$300 with our mufti day. Our young Vinnies are organising some other fundraisers but any other donations will be gratefully received.

If you would like to donate you can: -

- Send money in an envelope marked Fiji.
- Do it over internet into the school banking system reference Fiji.

If you require a receipt please email Patty.
As always we thank you for your support.

Winter Uniform... We change from summer to winter uniforms for Term 2 and 3. This usually is 'no hats' but while the sun is still quite high in the sky we will continue with these as an option. A reminder about 'proper' school shoes, these are to be leather, non high or low heel and not fashion/sports shoes. The girls are

to wear navy blue (below the knee) socks and the boys are to wear navy socks with maroon stripe.

UNCLAIMED PROPERTY FROM CAMP...

Following the Yr 5/6 Camp last week, we have managed to accumulate a large amount of unclaimed property. Can you please check the various items in Room 9's cloak bay.

Nothing Naughty Bars... For more information please see the insert with this week's newsletter.

PTA NEWS

PITA PIT LUNCH THIS FRIDAY!

NO LATE ORDERS WILL BE CONSIDERED

We hope that you will enjoy the lunch! This will probably happen once maybe twice a term for something a bit different.

FROM THE BOARD OF TRUSTEES

Dear Parents and Caregivers

I am back! You probably enjoyed a rest from me, the BOT 'campaign manager?'

This week I thought I would offer up some 'Frequently Answered Questions'

What is the time commitment for a trustee?

In my opinion it depends on 'what is going on in the school' at the time. For example last year the school had two compliance reviews, a large property build, policy updates and some new learning programmes introduced. So it was a busier year. This year will be more of a focus around implementation, improvements based on ERO review recommendations, further student achievement and improved communication. On average there are 10 planned board meeting per year but we are currently looking at creating some sub-committees of the board to increase efficacy and involving more of our parent community. The role of the chair has a greater time commitment due to the nature of the role and some additional responsibilities, in particular with the school's principal and leadership team.

How do the Principal and board work together?

The board of trustees are the governance of the school. The principal is responsible for the management of the school. The principal is a member of the board and acts as the board's educational leader and chief adviser. The areas of governance and management are to work in partnership. This can be a difficult concept for new trustees to grasp but this is a topic that will be learnt in the induction process as a new trustee.

Governance determines:	Management determines:
the what – designing the future	the how – designing how to get there
the ends – the outcome to be achieved	the means – strategies to achieve the ends
policies – statements if what is to be expected	procedures – steps to meet expectations

So what are the key dates if I want to be elected as a trustee?

Timeline	BOT Elections and Professional Development Action
04 May 2016	Main roll closes at 12 noon
By 06 May 2016	Nominations called for (closes at 12 noon)
18 May 2016	Supplementary Roll closes at 12 noon

20 May 2016	Nominations close
By 25 May 2016	Voting papers sent out (voting can begin)
03 June 2016	Close poll – Election Day at 12 noon
09 June 2016	Votes counted – results declared
10 June 2016	New members take office
14 June 2016	New Board member's induction (NZSTA PD)
16 August 2016	New Health and Safety Legislation (NZSTA PD)
01 November 2016	Strategic and Annual Planning (NZSTA PD)

Who should I contact if I want more information?

That would be me, your friendly campaign manager. Here are my contact details.

Cell number is 021 241 7482.


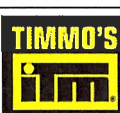


E mail: hayley.mcconnell@vodafone.co.nz

Kind Regards – Hayley McConnell (Chair – Board of Trustees)

SPORTS NEWS

COMPETITION NETBALL

DRAW FOR: Saturday 2nd April 2016

Team St Pat's.. (v)	Time Court	We thank our Sponsors
B&C Property Tycoons v Pokuru Ferns	9:50am C7	
B&C Property Tycoons v Aropapa Seniors	10:40am C6	
Timmos ITM Tigers v Korakonui Freshchoice chicks	9:25am C4	
Timmos ITM Tigers v Ohaupo Pumas	11:30am C4	
Gibson Construction Cobras v Korakonui Freshchoice chicks	10:40am C4	
Gibson Construction Cobras v Comrades Juniors	11:55am C4	
Fahrenheit Flames v TAI Hotsteppers	11:30am C2	
Fahrenheit Flames v TAI Goldferns	1:10am C2	
Pastoral Realty Panthers v Puahue Silverferns	11:55am C6	
Pastoral Realty Panthers v Pokuru Ferns	12:45pm C7	
Daffodils v Pekerau Pride	10:15am C7	
Daffodils v Ray White Pirongia Comets	12:20pm C8	

IMPORTANT REMINDERS...

Netball Uniforms...Are ONLY to be worn on the day of your game! The hoodies and dresses are NOT to be worn leisurely.

Nails; are to be cut short before game time.

NO Earrings or Jewellery; are to be worn on the court, or taped over. ALL items MUST be removed before games.

Socks; white socks ONLY are to be worn.

Underwear; black underwear ONLY is to be worn under the uniforms.

Shoes; suitable outdoor court shoes are to be worn on the court.

Drink; please ensure you have plenty of water on the day.

BEHAVIOUR...

Netballers...Remember while wearing your netball uniform your behaviour and attitude is a reflection of our school and our sponsors. We trust that you will represent our school positively. Parents please ensure that your child and you act responsibly and respectfully at all times. We are playing at junior competition levels and it is all about learning and developing game skills. This is a time to be enjoyed while we watch and encourage our children at game times. We hope you enjoy the season and have a lot of fun. **Go St Patrick's Netballers!**

Netball Fees; your child is allowed to participate in this week's grading games, however, if you have NOT paid the \$47.00 netball fee to the office by Monday 4th April 2016-your child **will be stood down** until the fee has been paid.

Code of Conduct; if you and your child have not returned the completed code of conduct forms, your child **will be stood down** until these forms have been returned to school.

BMX Nationals...

Three of our students competed at the BMX Nationals in the weekend.

Well, **Abbie Osborn** had a great weekend, she raced well in her heats placing 3rd in the first two races, and 4th in her third race to make the final. In the final Abbie placed 8th giving her a New Zealand title of NZ8 and qualifying her to attend the BMX World Championships in Colombia at the end of May representing New Zealand.

Andrew and Deb Osborn have decided this is a great opportunity so on the 16th May they fly out to Colombia to attend the World BMX Champs. Abbie will be fundraising to help get to Columbia, so watch this space.

Kale Duncan raced well in his heats placing 11th in his Cruiser mixed race, and he qualified for the semi-finals.

In the semi-finals Kale placed NZ6 qualifying him to attend the BMX World Championship in Columbia.

Nixon Parkes placed well in his first three races qualifying him for the quarter finals placing 4th and semi-finals placing 7th. Nixon placed NZ13, and this qualified him to attend the BMX World Championships also.

Awesome effort guys and good luck at the Worlds..!



God bless

Brian Belzacki
Principal

ST PATRICK'S PARISH NEWS



St Patrick's Catholic Church - Te Awamutu

Phone 871 6109

PO Box 191, Te Awamutu

Parish Priest: Fr Joe Stack

Email: parishpriest@stpatta.org.nz

Mass Times

Weekday Masses

Wednesday to Friday @ 9.15am

Holy Hour: after 9:15am Mass each Friday
with Benediction around 10:30am

Sunday 3rd April - 1st Sunday of Easter

Vigil Mass (Saturday)

5pm St Patrick's Te Awamutu

Sunday Masses: 9:30am St George's Te Kuiti

10:30am St Patrick's Te Awamutu

11:30am Our Lady of the Sacred Heart Otorohanga

Confirmation & Eucharist Preparation.

Confirmation lessons begin on 8th May.

It is important that you keep up your commitment to the programme by attending Sunday mass during our break in lessons.

COMMUNITY NEWS

CRAZY WALK on 2nd April.

Jenaya Higginson, Lisa Atkinson, Alana Kidd-Smith are part of a team of four called Twisted Blister, walking 100km in the Oxfam Trailwalker Event. It is happening this Saturday at Whakatane and we are hoping to complete it in 24 hours. Haley Fielder is also completing one leg with us. As a team, we have raised \$3,300 so far for Oxfam, with a target of \$3,500. Anyone that would like to follow our progress or donate can search for our page on Facebook "Twisted Blister - Oxfam Trailwalker 2016".

INTRODUCTION TO JUNIOR COACHING

This first step for new coaches provides information on how to organise a safe & fun football session for players. It also provides over 30 easy to follow coaching activities that players will not only enjoy, but learn from too. It is a great starting point for beginner coaches looking for friendly advice on how and what to coach your junior players.

Content covered includes:

- * The role of a game leader / coach
- * Introduction to football games & activities
- * Meeting the needs of junior footballers

All participants receive a digital electronic resource which contains over 100 games and activities for junior footballers.

DATE: Monday 4th April

LOCATION: Te Awamutu AFC

COST: Free

To register please
[CLICK HERE](#)

To enquire about the course

Email: alec.w@waibop.co.nz

JUNIOR LEVEL 1

COACHING AWARD

This course is perfect for people who are looking to improve their coaching and to develop their knowledge and understanding of how to work effectively with junior players.

Looking at both the 'How' and 'What' of coaching junior footballers through an interactive and practical approach, as well as providing a comprehensive resource for coaches to take away and use with their players.

Content covered includes:

- * What is an effective coaching session?
- * The qualities of a football coach working with junior players
- * Meeting junior footballers needs

DATE: Monday 11th April

LOCATION: Te Awamutu AFC 6pm - 9pm

COST: \$60

To register please
[CLICK HERE](#)

To enquire about the course

Email: alec.w@waibop.co.nz or phone 021 063 9371

WWW.NZFOOTBALL.CO.NZ

Te Awamutu SQUASH

JUNIORS CLUB NIGHT

Juniors club night start on **Monday, 2 May 2016** at the Te Awamutu Squash Club, Churchill Street and will run every Monday night during Terms 2 and 3.

Juniors club night is designed to develop squash skills through coaching, with the opportunity to participate in competitive games at other times.

Club Night runs as follows:

Years 3 to 4 - 5.30pm to 6.15pm

Years 5 to 8 - 6.15pm - 7.00pm

Years 9 and above - 7.00pm - 8.00pm

(Times may change slightly depending on numbers and ability)

Membership fees are \$100 per junior which includes access to the squash courts and coaching on junior club nights. Rackets are available to use at the courts.

Anyone interested is welcome come along on the first night. Any enquires to rebecca@bowersconcrete.co.nz

EGG-CELLENT EGGS

EGG CUSTARD!

Custard is a good choice if you're having dessert.

- 1 cup milk
- 1 egg
- 1 tsp honey
- 1/4 tsp vanilla essence

Whisk all ingredients together. Stir over a very low heat until the custard coats the back of a spoon. Serve hot or cold with fruit.



Developed by Sports New Zealand 2015

Nothing Naughty Order Form – St. Patrick's Senior School



The Year 7 and 8 students have been involved in a fantastic fundraising opportunity, selling protein bar, Fruit and Nut bars and Fruit bars. These bars are gluten free and are a healthy snack option for lunchboxes. These great tasting bars are now being brought to the rest of the school. The bars can be bought singularly to try from the office, before committing to an entire box. We still have some Fruit and Nut bars for immediate sale, otherwise ordered bars will be here at the start of Week 11.



Name: _____ Contact phone: _____ Date: _____ Room: _____

Name	Protein Mixed Flavours	Protein Fudge	Protein Caramel	Protein Vanilla	Protein Mint	Protein Pineapple	Fruit & Nut Apricot/ macadamia	Fruit & Nut Cranberry/ cashew	Fruit Bar Raspberry	Fruit Bar Very Berry	Total boxes purchased	Total amt owed	Pd
	20 box	20 box	20 box	20 box	20 box	20 box	20 box	20 box	20 box	20 box	20 box @\$40 each		

The ingredient list and nutritional values can be found on the Nothing Naughty website.

All proceeds go toward helping (funding Year 7 and 8 Leadership Camp and Inquiry Week activities) Thank you for your support.

Money can be paid to the office or through internet banking.

Please return order forms to Michelle Russ or the Office.

When products are received they will be delivered to classrooms.

Reference: Bars and Your Name

PLEASE SUPPORT OUR SPONSORS WHO SUPPORT US

ARTWORK DESIGN SETOUT BY ROSETOWN PRINT 07 871 7786



**Simply the best
TAKEAWAYS**

PH 871 8688 - SHOP 3, 235 SLOANE ST, TE AWAMUTU
(next to Firken Bar in Countdown Complex)

**FRESH FISH AVAILABLE DAILY AND ALSO OFFER
GLUTEN FREE OPTIONS**



TE AWAMUTU, NZ

TE AWAMUTU KIDS ZONE
Before & After School Care
Holiday Programmes

Simone Monkley
027 485 3038
kidszone.simone@hotmail.com



Ray White

Gregg Tickelpenny
Licenced Agent - Principal

111/115, 116/117, Market Street, Auckland
P: 07 571 6150 E: gregg@raywhite.co.nz
222 Auckland Street, P.O. Box 420
Te Awamutu, New Zealand
Raywhite Realty, 111/115, 116/117, Market Street, Auckland
rwt@raywhite.co.nz

**Total
Automotive
& Engineering**

CRAIG SILVESTER
managing director

452 Bond Road
Te Awamutu
PH: 07 870 6255
FAX: 07 870 6258
MOB: 021 743 227



Ross Collins
Director
m: 0274 905 164

**COLLINS
FLOORING XTRA**

329/1 Benson Road, Te Awamutu 3800
t: 07 870 1091 f: 07 870 1092
e: teawamutu@flooringxtra.co.nz
www.flooringxtra.co.nz



Watson Hawthorth Motors
62-66 Kikakini Road, P.O. Box 420, Te Awamutu 3840

Justin Hawthorth
SALES MANAGER
Nick Wardlaw
SALES

Phone: (07) 871 4187
Fax: (07) 871 3223
Alt/Hours: (07) 871 5844
Mobile: (027) 271 4310
Email: whmta@xtra.co.nz

FREEPHONE 0800 16 90 57

www.whmotors.co.nz

PERKINS
CARPET CLEANING & FLOOR SANDING SERVICES

JIM & DONNA PERKINS
Carpet Cleaning • Home Furnishing
07 871 7372 • 021 278 4389
P.O. BOX 541 TE AWAMUTU



CALL US ON
07 871 8890
41 MARKET ST
TE AWAMUTU
REDREDRED.CO.NZ

**Safe 'n' Sound
Storage Ltd.**

**Yard Storage • Lock-up Self Storage
• Caravan Hire - Long & Short Term**

Maryanne

Ph. 07 871 2171 Mob. 027 440 7101

249 BRUCE BERQUIST DRIVE - TE AWAMUTU

**100% STRAWBRIDGE APPLIANCES & BEDS
PLUS**

**BUILDING OR RENOVATING,
CALL ME TODAY
FOR AUDIO & VIDEO DISTRIBUTION
REQUIREMENTS.**

JASON STRAWBRIDGE
078717090 OR jason.s@100percent.co.nz

TIMMO'S

TIMBER | HARDWARE | BUILDING PRODUCTS
LOCAL FRAME & TRUSS MANUFACTURER
SEE THE BUILDING SPECIALISTS

PROUDLY SUPPORTING OUR LOCAL COMMUNITY

CORNER CAMBRIDGE & TE RAHU ROADS | TE AWAMUTU
PH: 871-7545 | SALES@TIMMOS.CO.NZ